

Breas Vivo 2 and Vivo 3

Vivo 3: battery life approximately 2 hours

Vivo 2: no battery. Unsuitable for invasive ventilation.



Do not remove or discard green tubing

Two types of single limb circuit work with the Vivo:

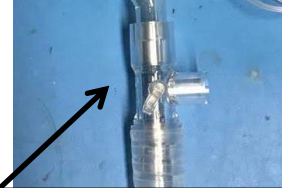
Intersurgical **5804000**



Expiratory Valve – DO NOT OCCLUDE

Respironics **1065836**

Discard long thin tube and close port on circuit



1. Ensure length of green oxygen tubing is attached from the wall oxygen flowmeter to the metal connector on the rear of the vent (see photo above).
2. Connect the circuit directly to the rear of the ventilator (see photo above).

3. Plug in and turn on using **ON/OFF** button.



4. Arrow buttons used to navigate – up/down to scroll, left/right to change values

5. Press button under **Setup** – set desired mode (choose **PCV+A**, **PSV**, **S/T**, **CPAP**) and appropriate settings. Maximum PEEP = 20 cmH₂O. May be less effective at inspiratory pressures > 25 cmH₂O due to the leak design.

Note: For pressure control, turn off Target Volume. If changing mode, use **NEXT** button to scroll through screens then **CONFIRM**.

6. Set **alarms** either under **Setup** if mode changed or press button under **Alarm** – **ENSURE** alarms for **Low MV**, **Rebreathing** and **Disconnection** are **ON**.

7. Press **ON/OFF** button and button under **Start** to start ventilation.

8. At the wall, set O₂ flow to 15 litres and titrate down to achieve target SpO₂.

Litres	Approx. FiO ₂
0	21%
1	27%
5	43%
10	65%
15	87%

9. Press the button under **Monitor** for monitoring page.

10. To stop ventilation press + hold **ON/OFF** button and then press alarm **Silence** to confirm. To turn vent off press **ON/Off** briefly and then button under **OFF** on display.

Troubleshooting:

The trigger is very sensitive. If you suspect auto-triggering or the patient seems tachypnoeic, try changing **Exp. Trigger** and **Insp. Trigger** from **Auto** to a higher number (range 1-9).

If oxygen flow was turned on before ventilation was started, you may later encounter “flow sensor failure”. To fix: turn ventilator OFF, oxygen OFF, turn ventilator ON, start therapy and then turn oxygen back ON.

